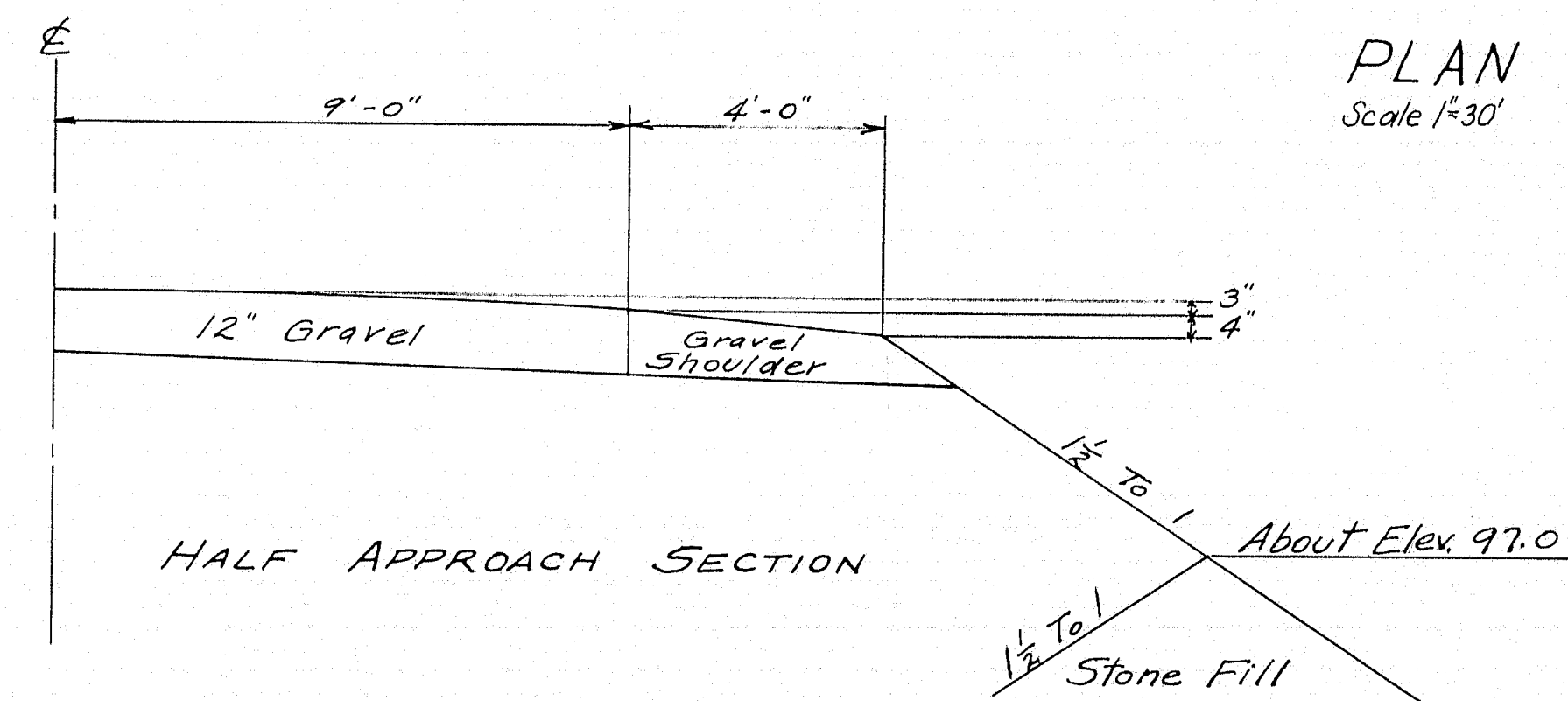
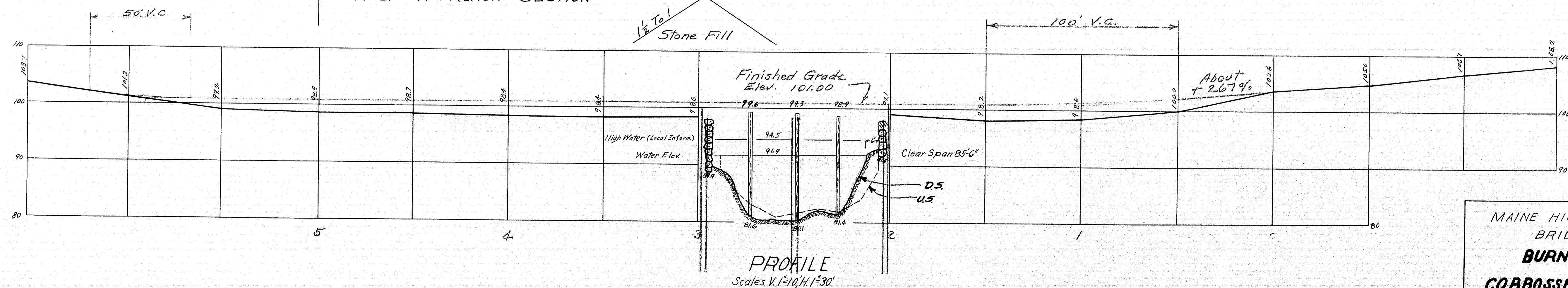


DRAINAGE AREA = 186 S₉ Mi.



PLAN
Scale 1"=30'

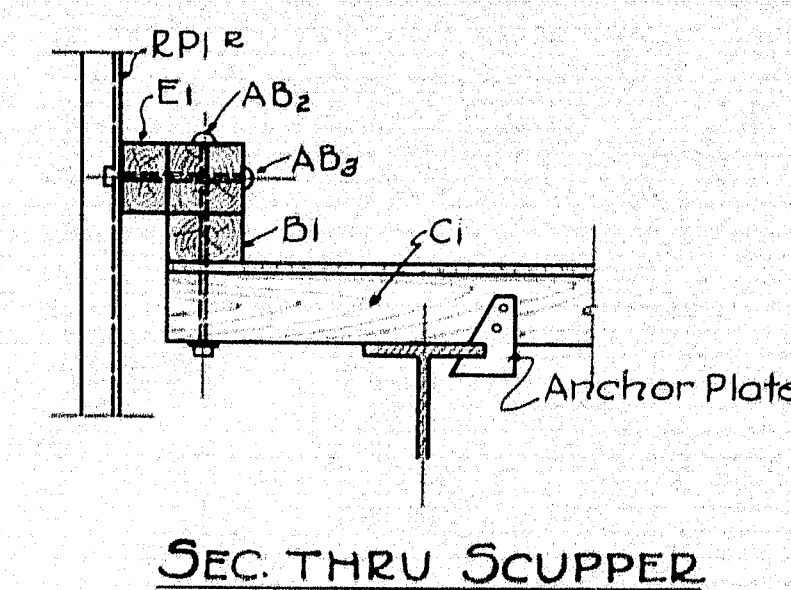
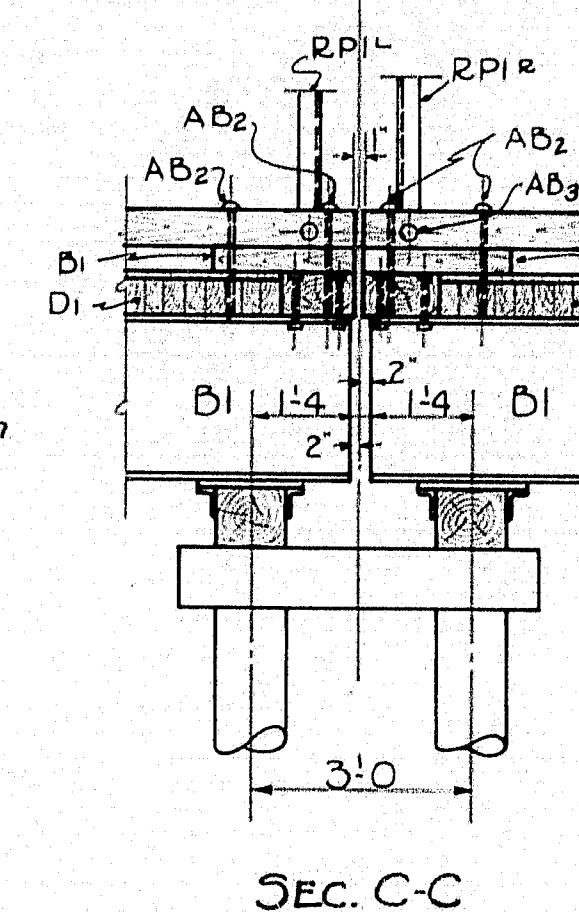
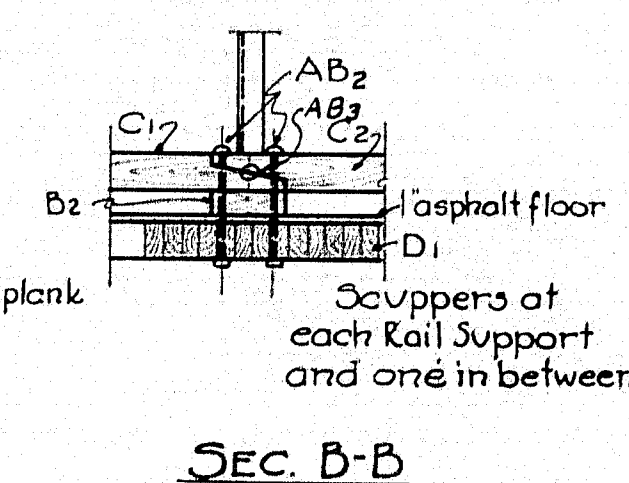
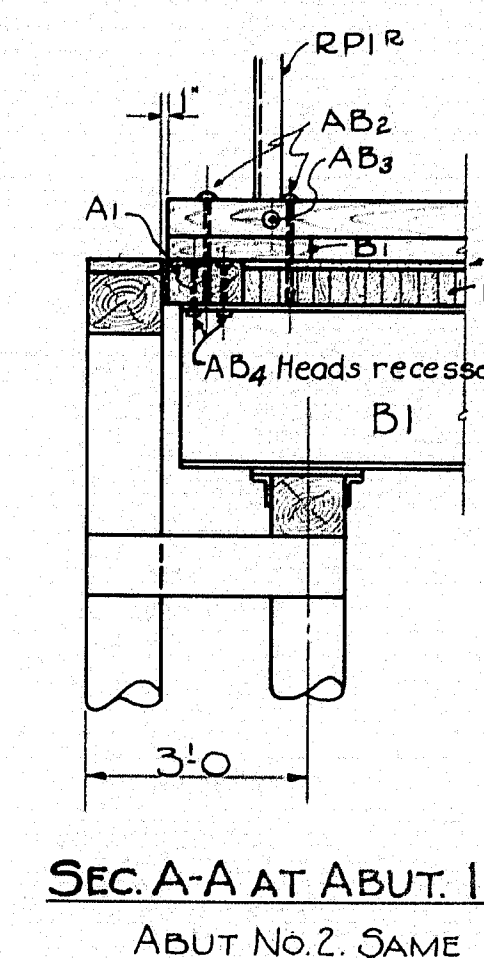
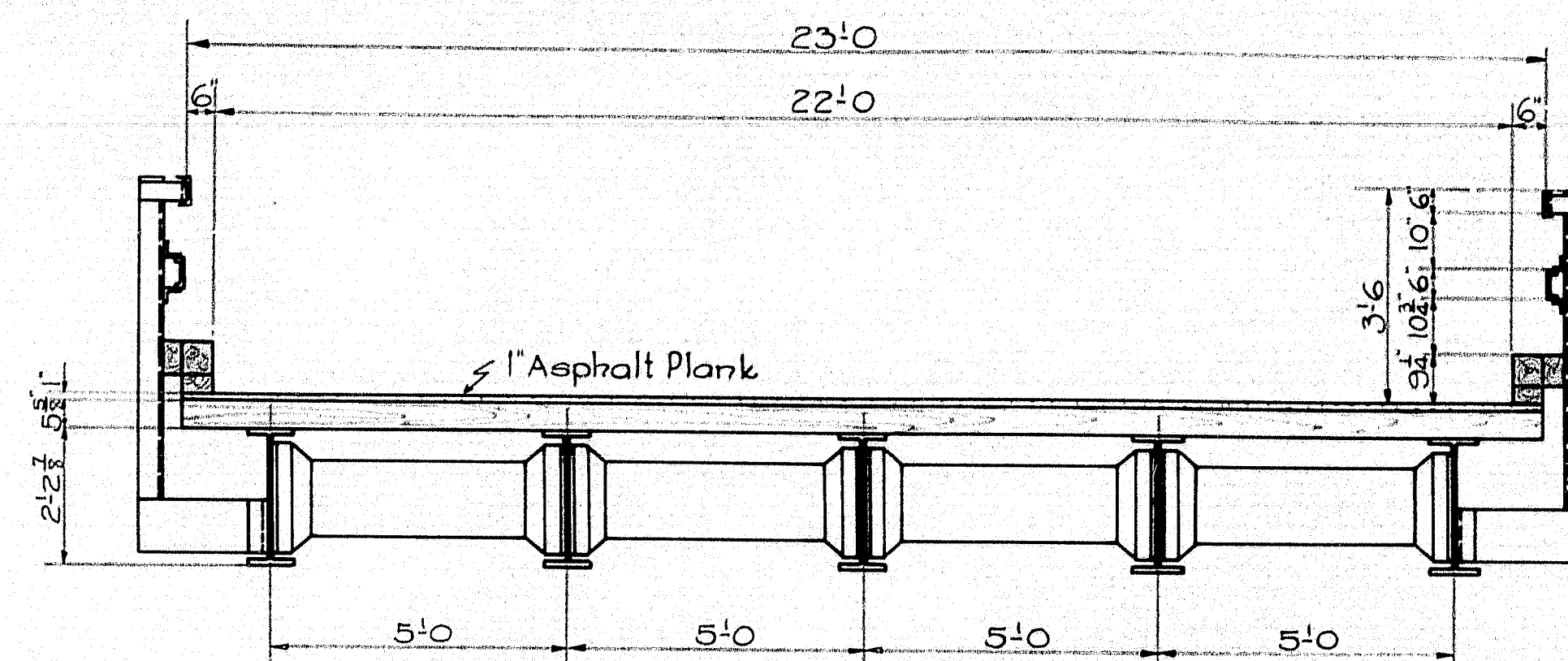
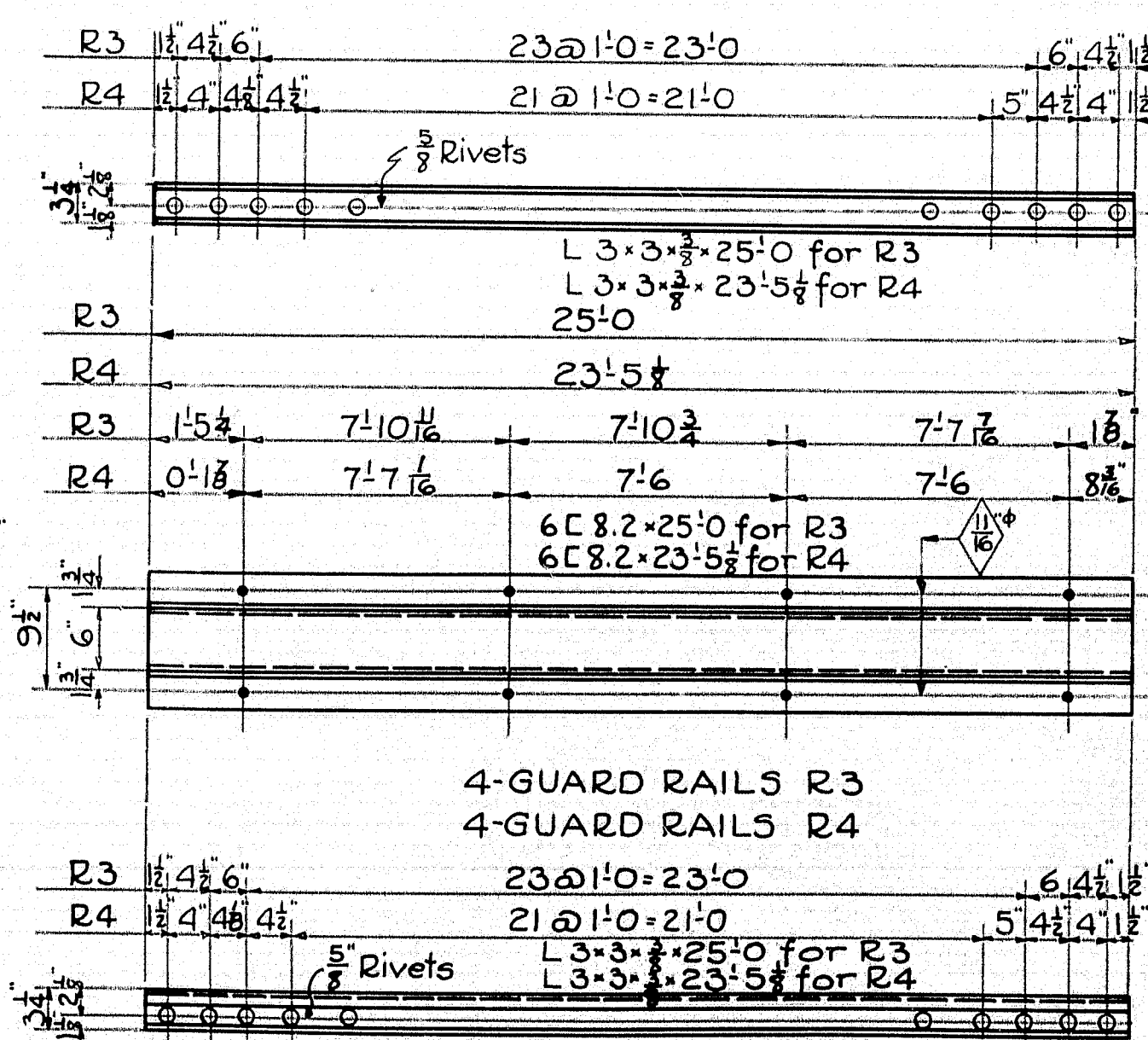
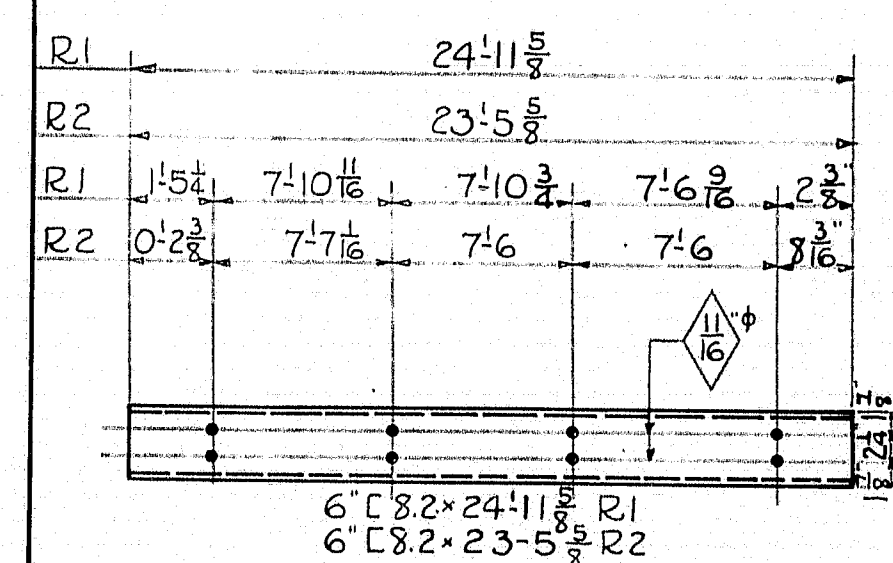
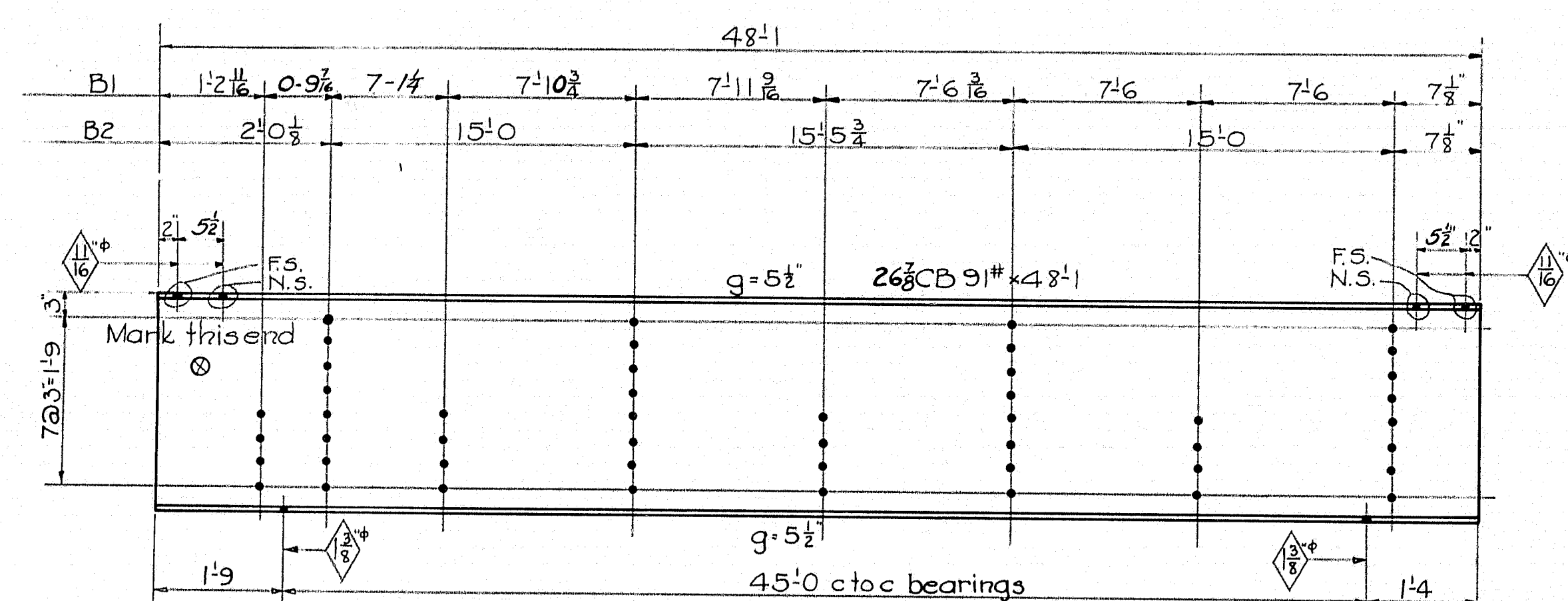
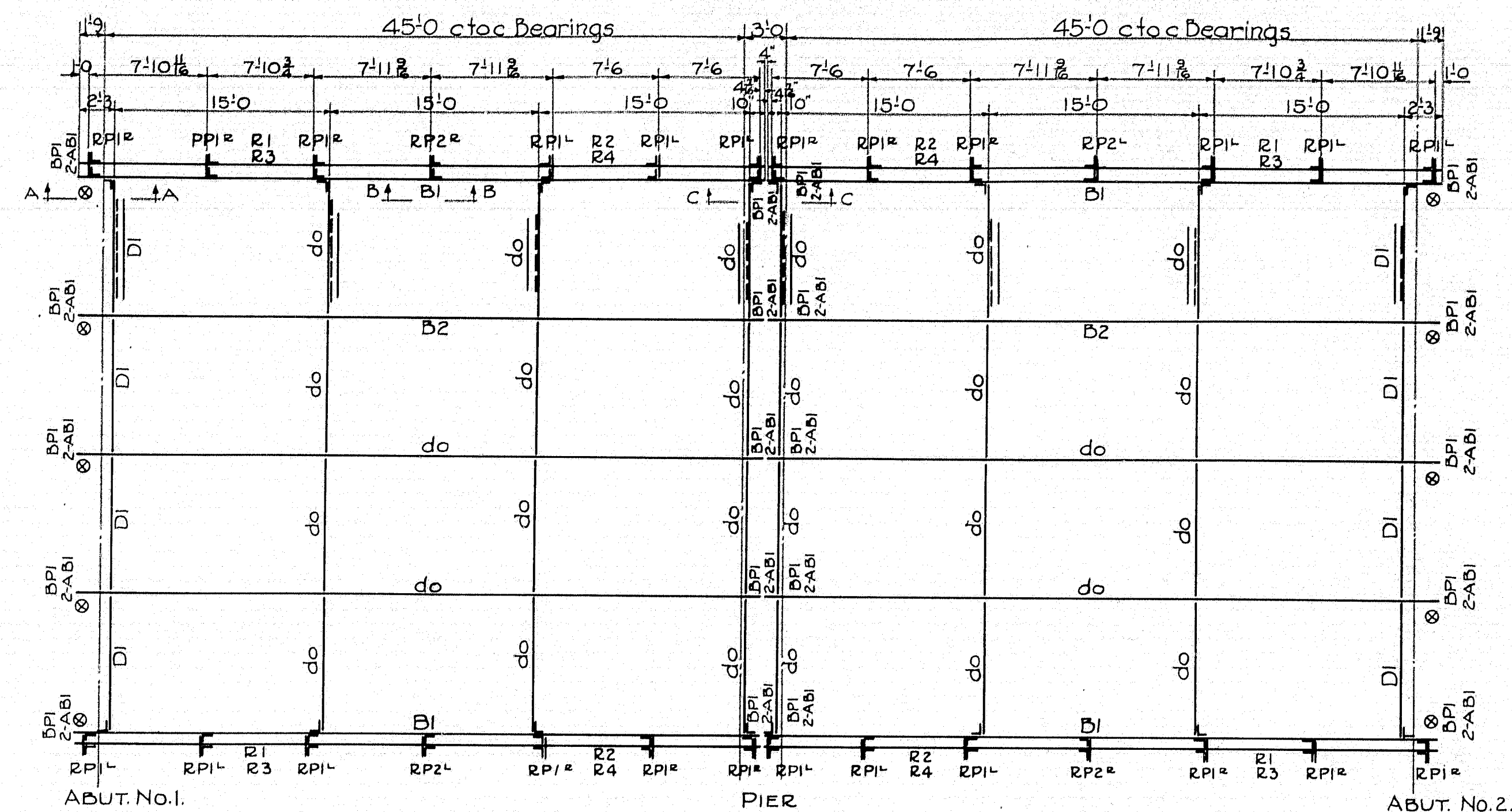
NOTES
SUPERSTRUCTURE- Seven stringers in each span, mixed log and timber. Poor condition. 4" planking, poor.
SUBSTRUCTURE- Abutment No. 1 of roughly split stone, capped with concrete. Stone fill dumped around it. Abutment No. 2 of fieldstone fair. Three timber bents, somewhat decayed.
Stream Bed-Soft clay, Max penetration 50ft. (Note - fair soundings could not be taken)



MAINE HIGHWAY COMMISSION
BRIDGE DIVISION
BURNHAM BRIDGE
OVER
COBBOSSECONTEE STREAM
IN THE TOWNS OF
WEST GARDNER & LITCHFIELD
KENNEBEC CO.
SURVEY PLAN
SHEET 1 OF 3
AUGUSTA, ME. Feb. 1, 1929

Town 06-27
Bridge 2112

Surveyed by Thomas
Drawn by W.S.R.

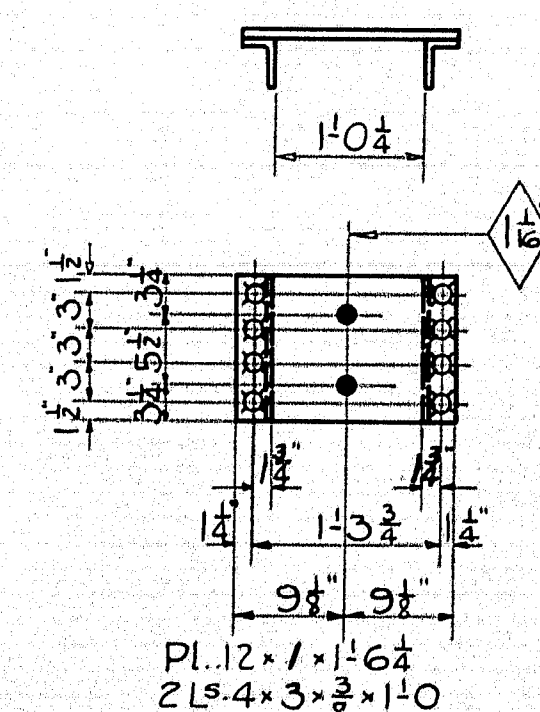
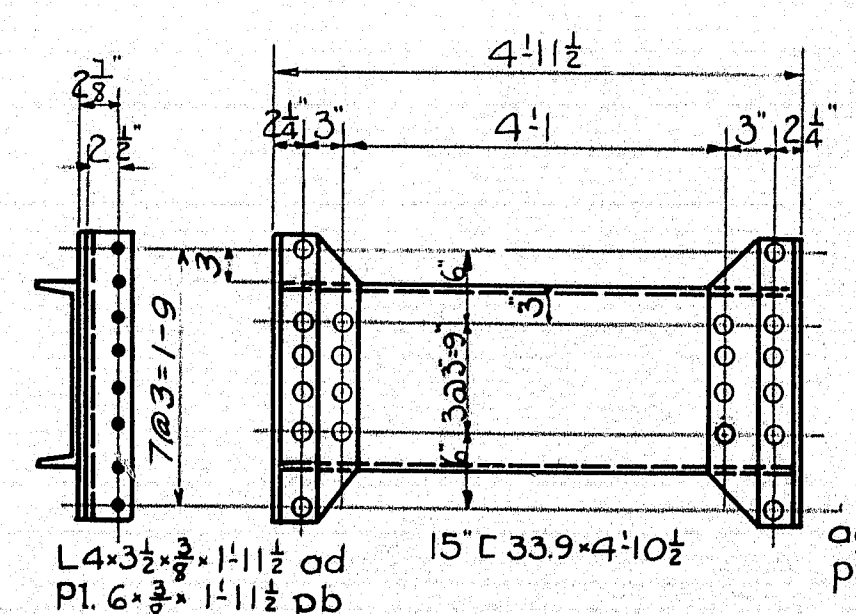


BOLT LIST FOR WOOD					
MARK	No.	SIZE	WASHER	DESCRIPTION	LOCATION
AB ₂	104	$\frac{5}{8} \times 1-5\frac{3}{4}$	¹⁰⁴ Cast	Carri Bolts	Curbs
AB ₃	28	$\frac{5}{8} \times 10\frac{1}{2}$ "	"	"	Rail Pos.
AB ₄	40	$\frac{5}{8} \times 7\frac{1}{2}$ "	⁴⁰⁰ CUT	Mach Bolts	End Tim
720 Anchor Plates					


TIMBER SCHEDULE					
MARK	No.	LENGTH	DRESS	FIN. SIZE	REMARKS
Q A1	4	23'-0"	4-5	6 1/2" x 11 1/2"	End Timber
X B1	9	2'-0"	"	3 1/2" x 5 1/2"	End Scupper
X D2	44	1'-0"	"	3 1/2" x 5 1/2"	Scupper
X C1	4	25'-9"	"	5 1/2" x 5 1/2"	Curb
X C2	4	24'-0"	"	5 1/2" x 5 1/2"	"
X D1	426	23'-0"	"	2 1/2" x 5 1/2"	Strip Floor
X E1	28	6'	"	3 1/2" x 5 1/2"	Rail Block
2140 3/4 ft Asphalt Plank					
⊗ Indicates Hardwood					
X Native Spruce, brush treated with Creosote					

BOLT LIST FOR STEEL			
No.	SIZE	LENGTH	LOCATION
240	$\frac{3}{4}$ "	2 $\frac{1}{4}$ "	Diaphragms to string G.R. Posts for stringer
144	$\frac{3}{4}$ "	1 $\frac{1}{2}$ "	"
128	$\frac{5}{8}$ "	1 $\frac{1}{2}$ "	G.R. to G.R. Posts

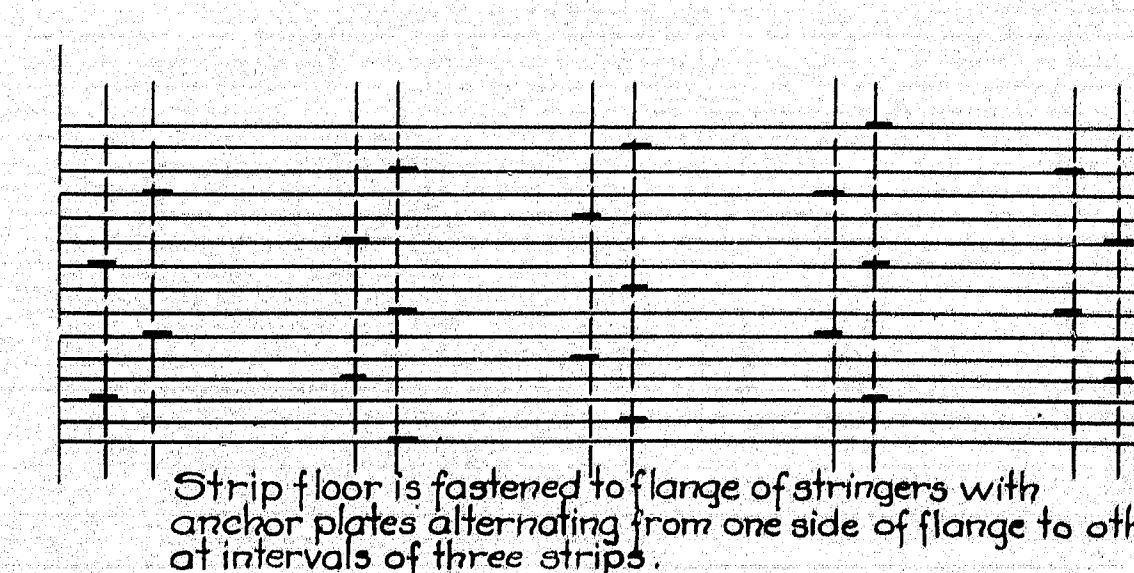
NOTE:-
Rivets $\frac{3}{4}$ " unless noted, holes $\frac{13}{16}$ "
unless noted.
All shop work to be riveted.
All field connections to be bolted.
SPECIFICATIONS:-
Maine State Highway Commission
for Steel Highway Bridges-1936.
M-15 Loading



Lag Screw 1" ϕ x 10"
Washers 2 $\frac{1}{2}$ " dia. 1 $\frac{1}{16}$ " ϕ hole



40 LAG SCREWS ARE



PART PLAN VIEW OF FLOOR

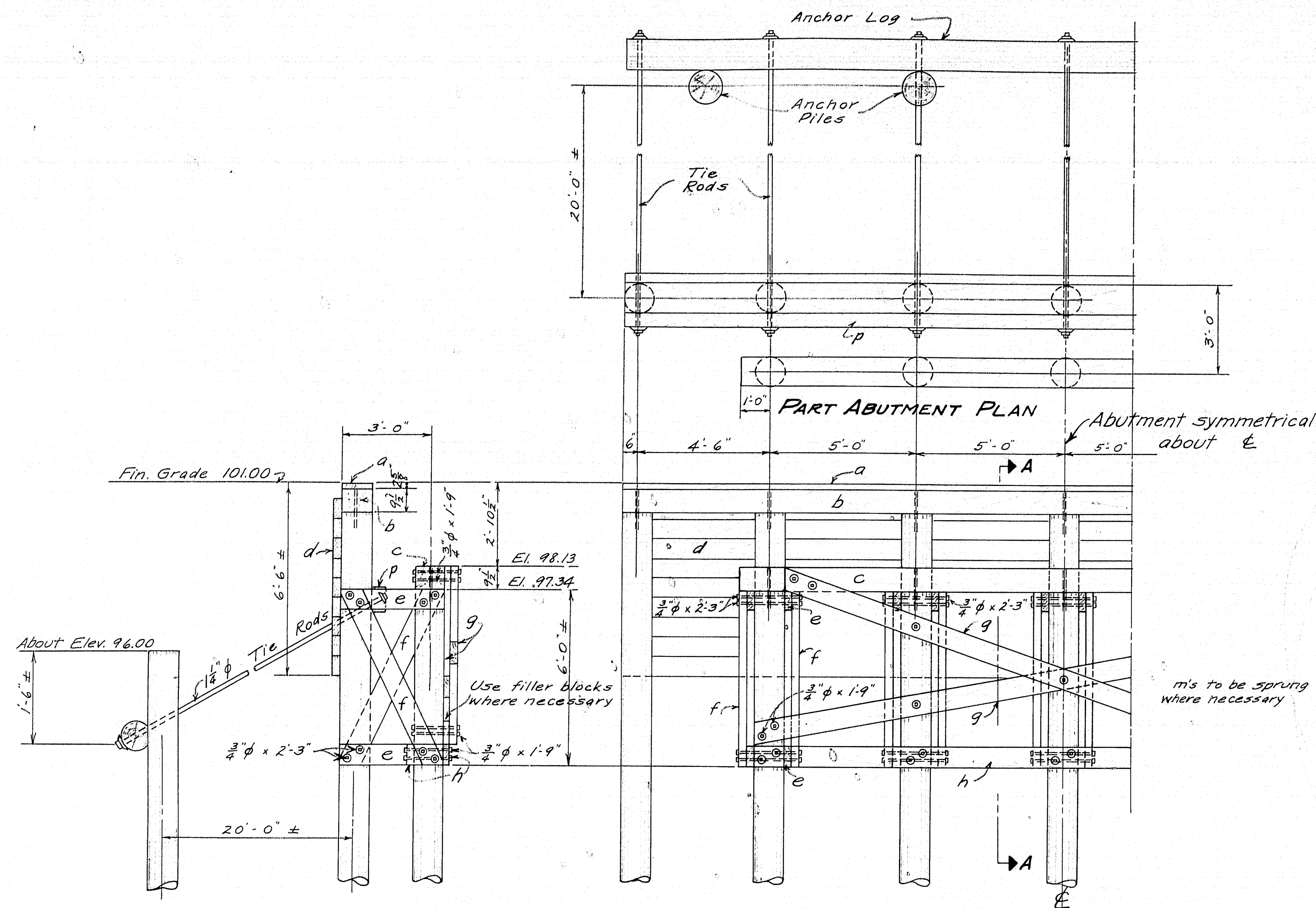
Drawn by L.W.
Traced by I.R.
Checked by G.W.B.

TOWN 06-27
Bridge 2112

STATE HIGHWAY COMMISSION
BRIDGE DIVISION

BURNHAM BRIDGE
OVER
COBBOSSEECONTEE STREAM
BETWEEN THE TOWNS OF
WEST GARDINER AND LITCHFIELD
KENNEBEC COUNTY
SUPERSTRUCTURE DETAILS

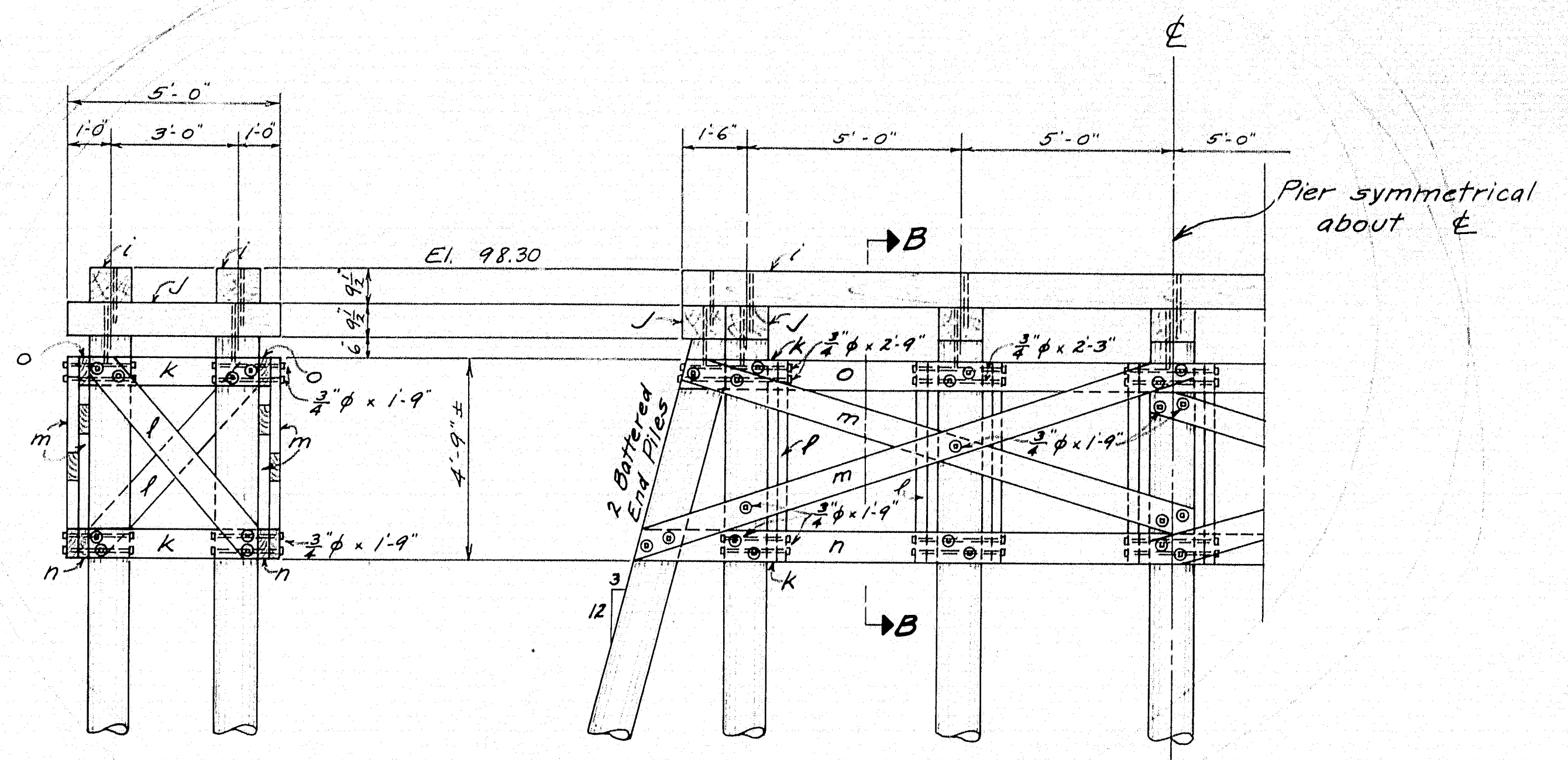
SHEET 3 OF 3 SHEETS AUGUSTA ME APRIL 1936



SECTION A-A

PART FRONT ELEVATION ABUTMENT

Approximate lengths of piles 35' but actual length to be determined in field.
32 piles required - native spruce - untreated.
2 anchor logs required 30' long - min. tip 10'.



SECTION B-B

PART ELEVATION PIER

Approximate lengths of piles 35' but actual length to be determined in field.
14 piles required - native spruce - untreated.

MARK	FIN. SIZE	LENGTH	DRESS	No. Req'd	LOCATION
a	2 1/2" x 12"	30'-0"	D 12" Side	2	Abut. Backwalls
b	9 1/2" x 12"	30'-0"	D 12" Side	2	"
c	9 1/2" x 12"	22'-0"	D 12" Side	2	Abut. Bridge Seats
d	4" x 8"	30'-0"	"	18	Plank Back of Abuts.
e	3" x 8"	3'-6"	"	40	Abut. Bracing
f	3" x 8"	8'-0"	"	20	"
g	3" x 8"	25'-0"	"	4	"
h	3" x 8"	21'-0"	"	4	"
i	9 1/2" x 12"	23'-0"	D 12" Side	2	Pier Bridge Seat
j	9 1/2" x 12"	5'-0"	D 12" Side	7	" Caps
k	3" x 8"	4'-0"	"	16	" Bracing
l	3" x 8"	8'-0"	"	8	"
m	3" x 8"	16'-0"	"	8	"
n	3" x 8"	26'-0"	"	2	" Bottom
o	3" x 8"	24'-0"	"	2	" Top
p	6" x 10"	30'-0"	"	2	Abut. Anchor Timbers
⊙	indicates	hardwood			
x	"	native spruce brush treated with creosote			

No. Req'd	SIZE	LENGTH	WASHER	DESCRIPTION	LOCATION
122	3/4" φ	1'-9"	cast 244	Machine	Bracing Abuts. + Pier
104	3/4" φ	2'-3"	" 208	"	"
8	3/4" φ	2'-9"	" 16	"	"
52	3/4" φ	1'-6"	"	Drift Pins	Caps Abuts. + Pier
14	1 1/2" φ	24'-0"	cast 28	Tie Rods - End End Threaded	Anchorage

DESIGNED BY HAMILTON
TRACED BY BURNHAM
CHECKED BY BURNHAM

TOWN 06-27
BRIDGE 2112
STATE HIGHWAY COMMISSION
BRIDGE DIVISION
BURNHAM BRIDGE
OVER
COBBOSSECONTEE STREAM
BETWEEN THE TOWNS OF
WEST GARDINER & LITCHFIELD
KENNEBEC COUNTY
SUBSTRUCTURE
SHEET 2 of 3 AUGUSTA, ME. APRIL, 1936

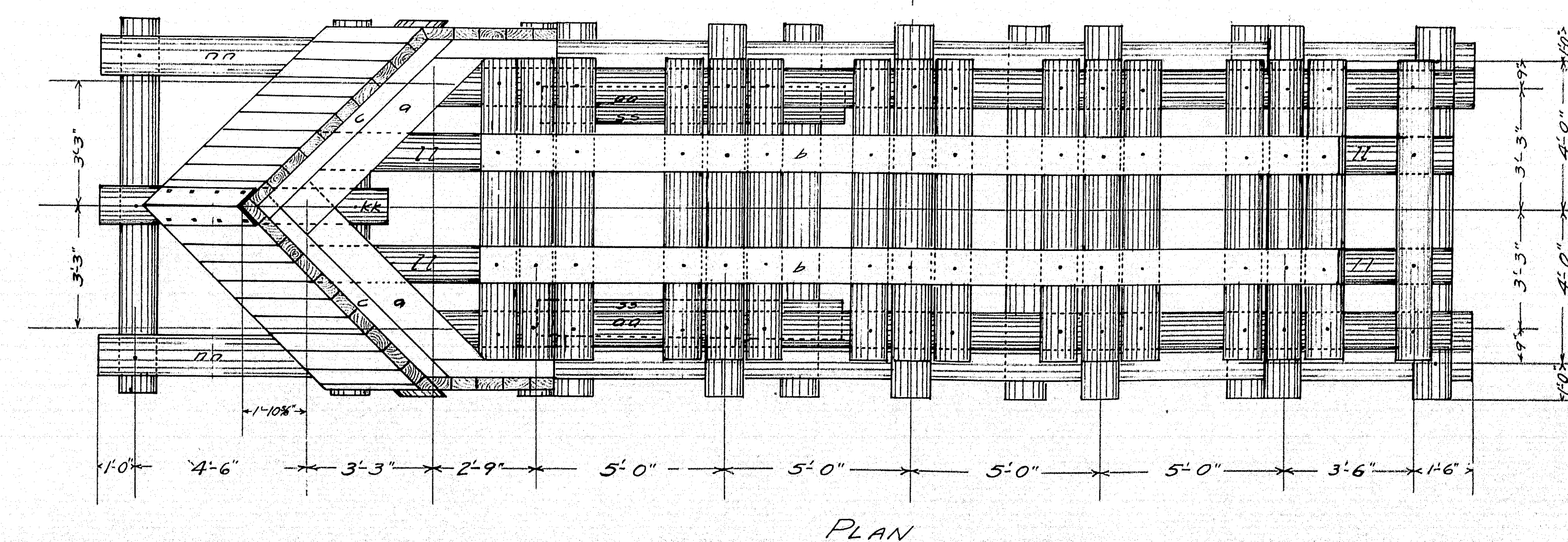
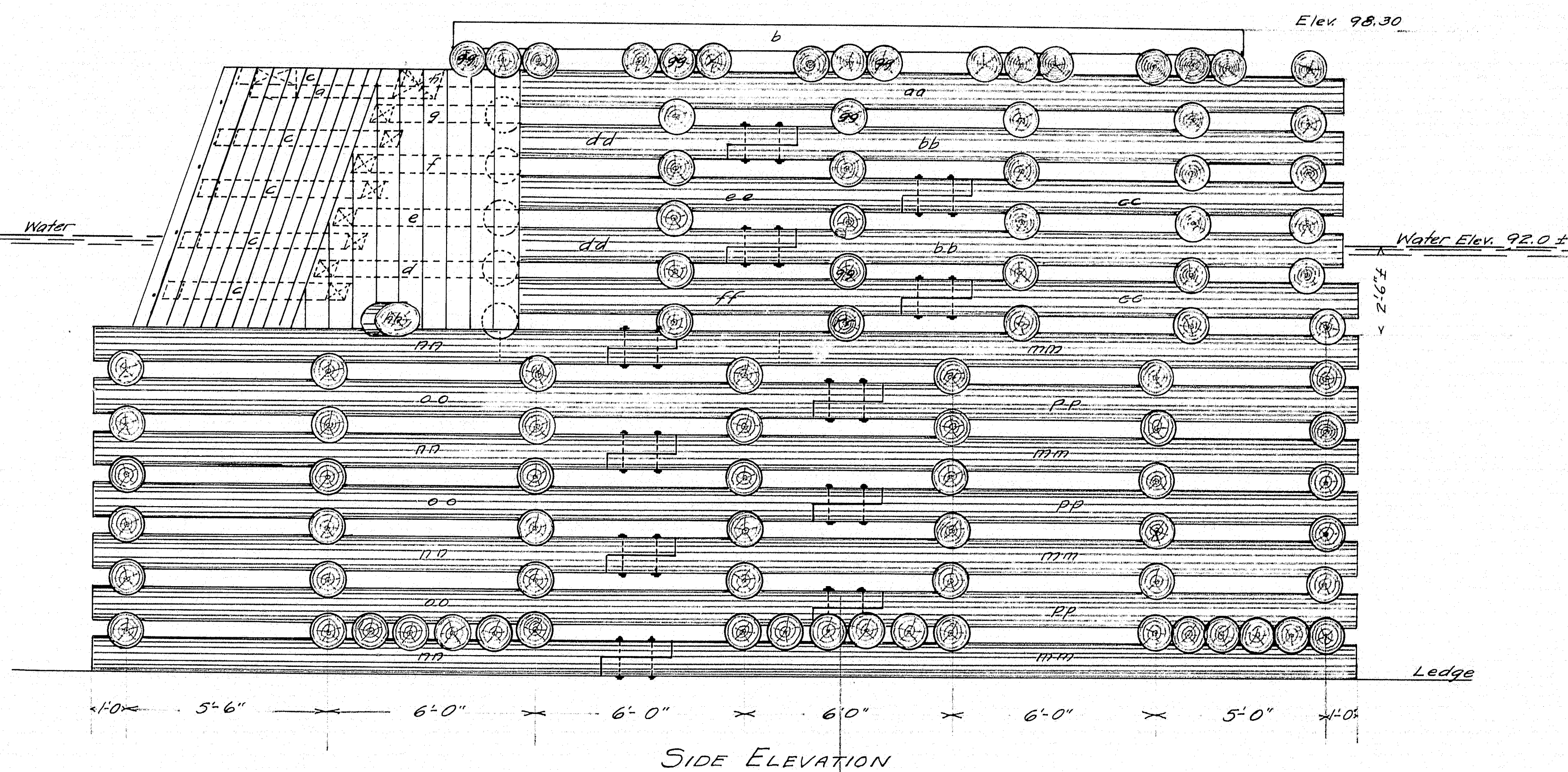
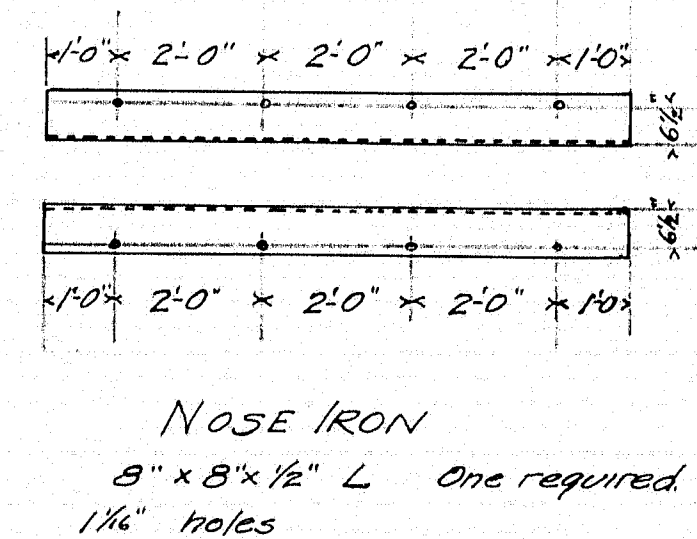
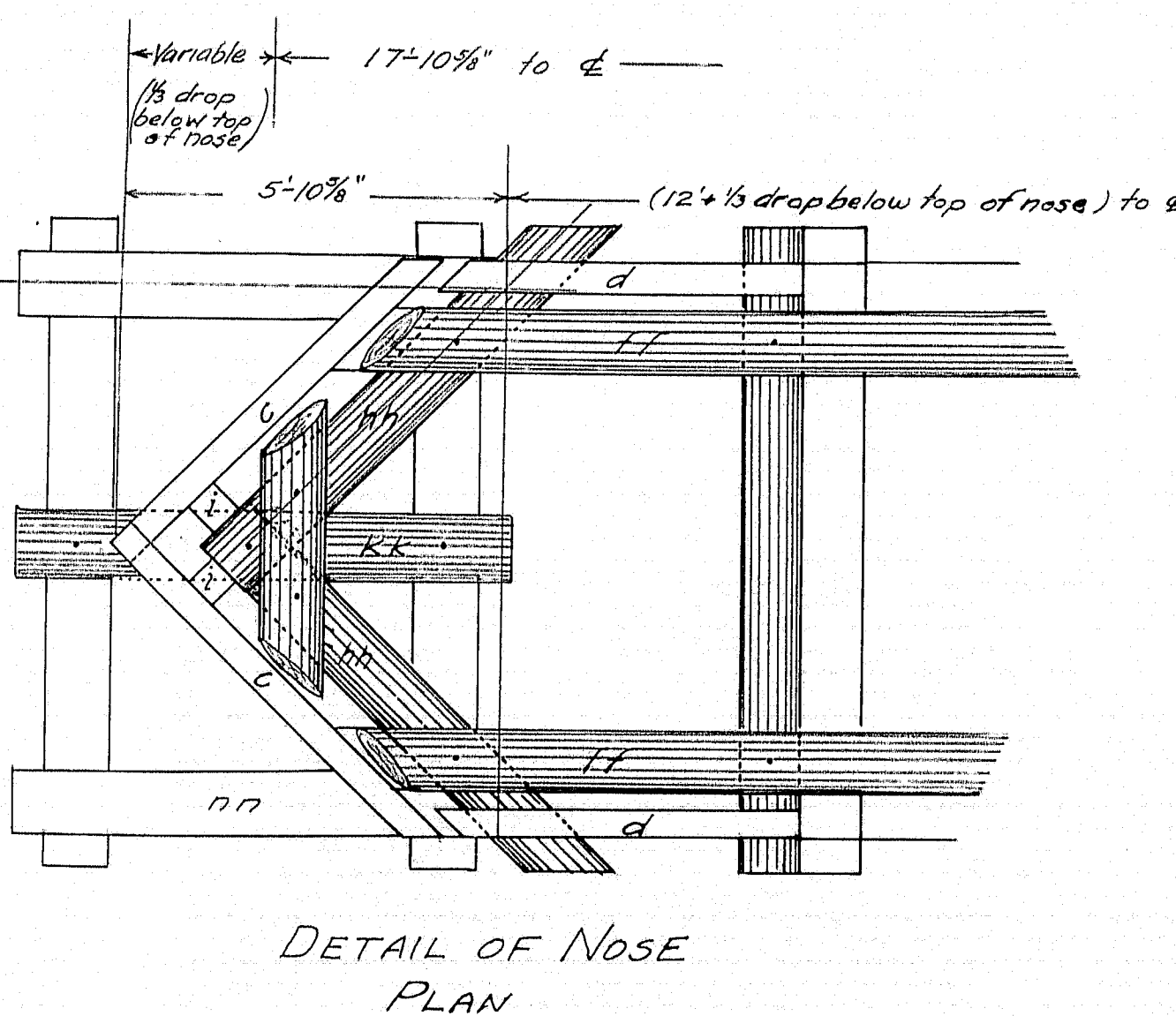
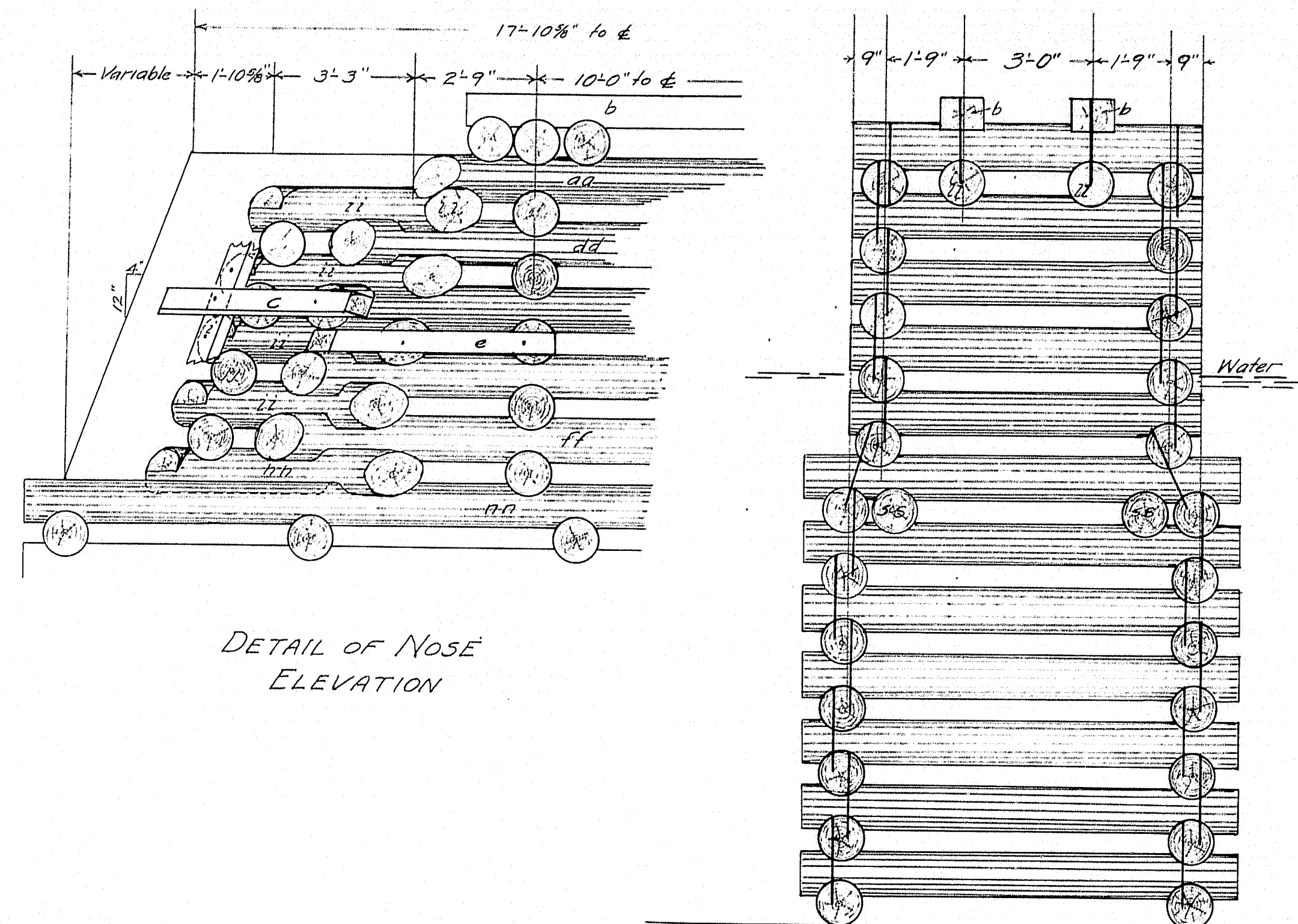
LOG SCHEDULE			
Mark	No.	Length	Remarks
aa	2	28'	Longitudinal Logs - Upper Section.
bb	4	18'	" " " "
cc	4	14'	" " " "
dd	4	15'	" " " "
ee	2	19'	" " " "
ff	2	20'	" " " "
gg	40	8'	Tie Logs
hh	2	8'	Bottom Nose Logs
ii	8	7'	Nose Logs
jj	4	5'	" Blocks
kk	1	8'	Longitudinal Log under Nose
ll	2	30'	Bridge seat bearing
mm	8	22'	Longitudinal Logs - Lower Section
nn	8	17'	" " " "
oo	6	23'	" " " "
pp	6	16'	" " " "
rr	60	10'	Tie Logs
ss	2	8'	Splice logs.

TIMBER SCHEDULE				
Mark	No.	Length	Dress	Remarks
a	2	7'	12"x12"	Top Nose Timber
b	2	23'	12"x9 1/2"	Pier Bridge Seat
c	10	7'	6"x6"	Spky timber
d	2	6'	6"x6"	" "
e	2	6'	6"x6"	" "
f	2	5'	6"x6"	" "
g	2	5'	6"x6"	" "
h	2	4'	6"x6"	" "
i	2	7'	6"x6"	Vert Nose Timber
j	40	8'	4"x8"	Nose Plank.

BOLT SCHEDULE				
Kind	No.	Size	Length	Washers
Drift	350	3/8"	2'-0"	—
Mach.	44	3/4"	1'-3"	88 coat
Lag	8	1 1/4"	5"	—

NOTE

Splice long logs where necessary as shown on Side Elevation, making splice 2' long and bolting with two 3/4" bolts with nut and two cast washers.
Place logs (ss) inside of upper splies (mm-nn).
Omit splices where logs of full length can be obtained.
All logs to have a minimum top diameter of 10".
Make opening between logs about 6".



Drawn by S.S. Mitchell
Traced by S.S.M.
Checked by J.H.

TOWN 05-27
BRIDGE 2112
STATE HIGHWAY COMMISSION
BRIDGE DIVISION
BURNHAM BRIDGE
OVER
COBBOSSEECONTEE STREAM
BETWEEN THE TOWNS OF
WEST GARDINER AND LITCHFIELD
KENNEBEC COUNTY
PIER DETAILS
SHEET 4 OF 4 SHEETS AUGUST 1936